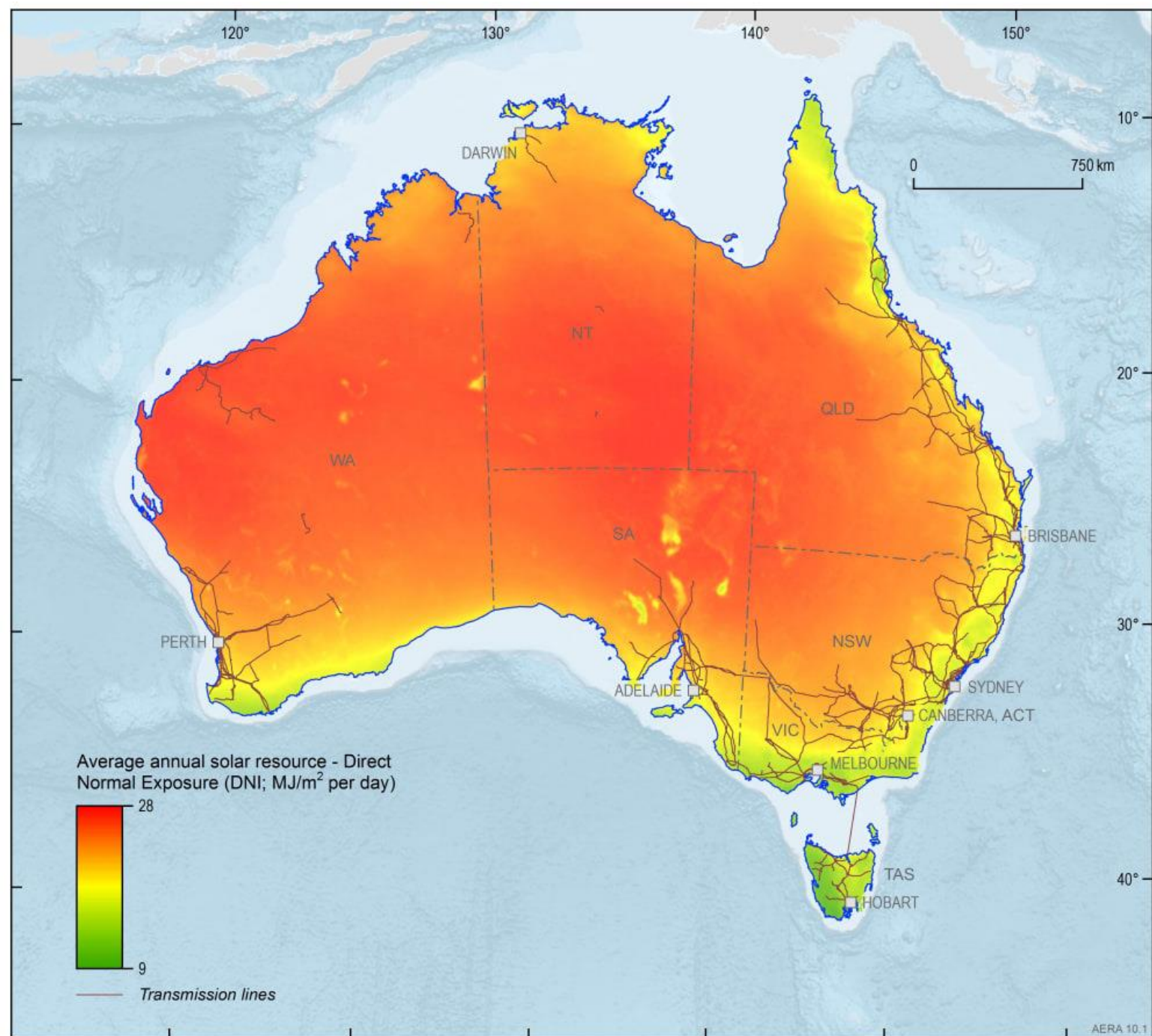


IRED 2020 Australia





Source: Bureau of Meteorology, 2016. Solar radiation data derived from satellite imagery processed by the Bureau of Meteorology from the Geostationary Meteorological Satellite and MTSAT series operated by Japan Meteorological Agency and from GOES-9 operated by the National Oceanographic and Atmospheric Administration (NOAA) for the Japan Meteorological Agency; Geoscience Australia

Source: AERA 2018

MI IC#1 2020

- Promoting innovation
- WSC - Grid interaction
- Renewables Data



ADELAIDE, AUSTRALIA

Invites IRED 2020

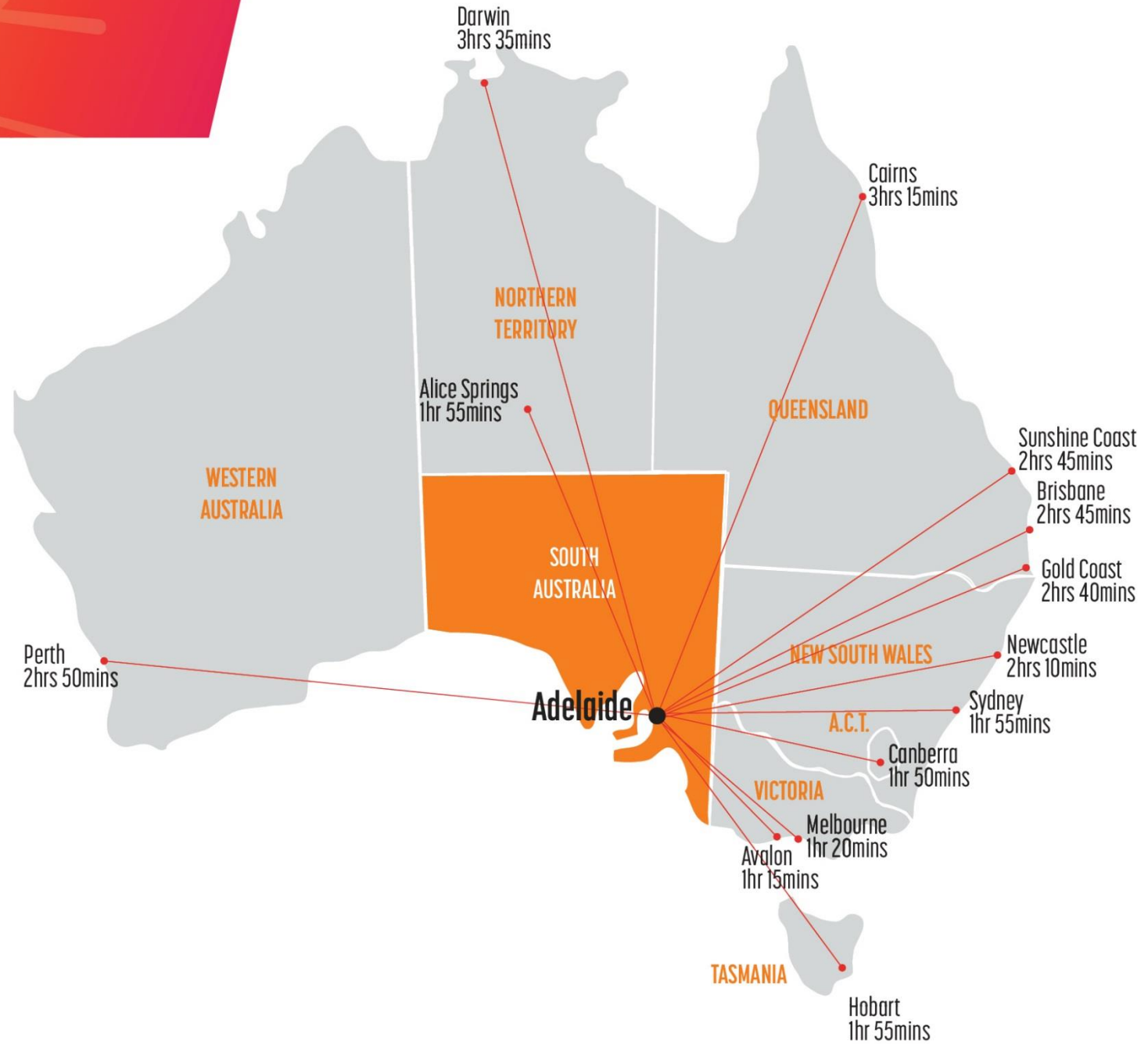


ADELAIDE
SOUTH AUSTRALIA

WHY ADELAIDE



SOUTH AUSTRALIA



ADELAIDE AIRPORT

- 7 kilometres from the city,
10 minute transfer
- Central access to Australia
- Fast, efficient and clean





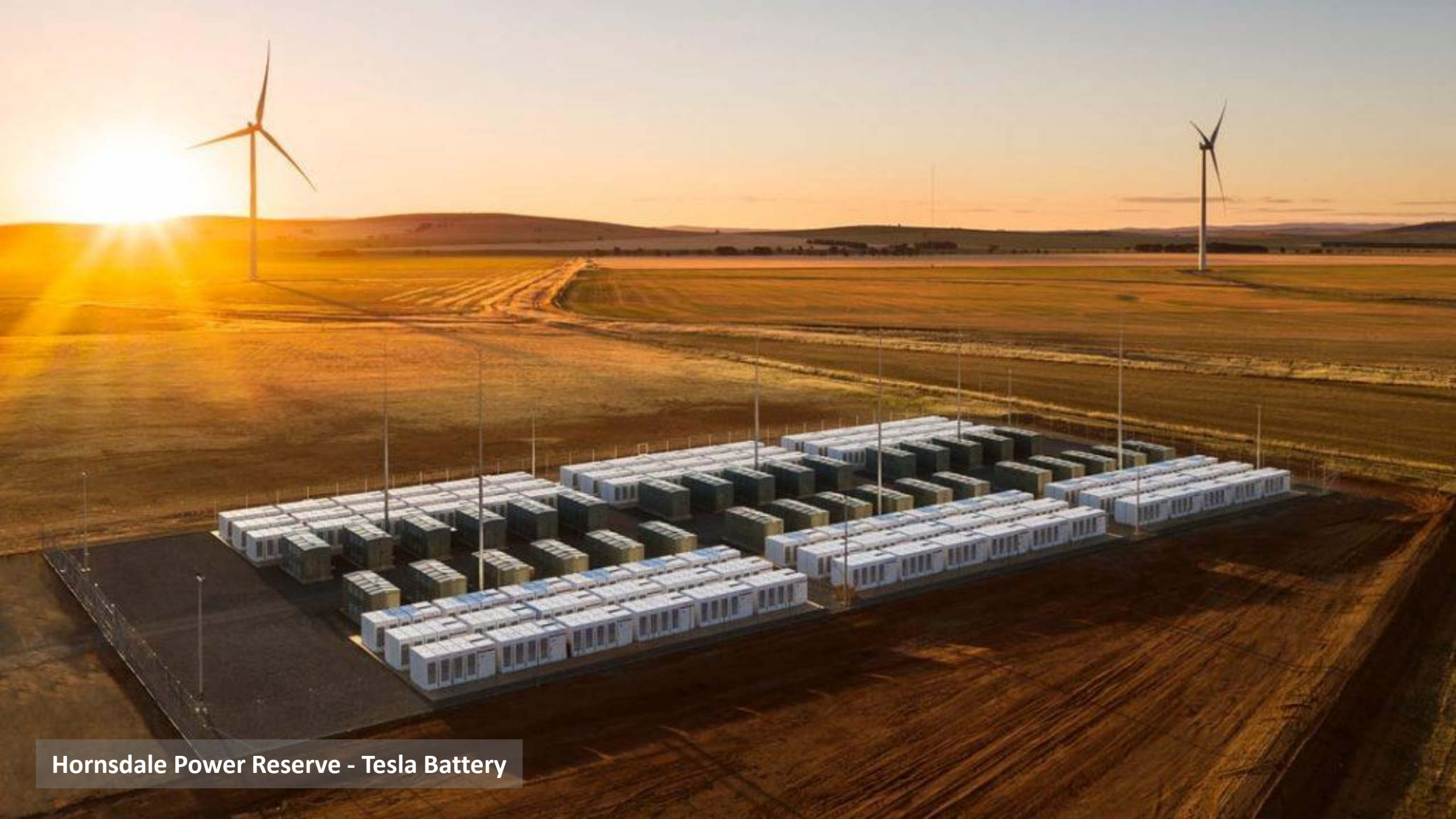
ADELAIDE AIRPORT IS SERVED BY

9 international carriers connecting South Australia to more than **319** cities around the globe, either direct or via one-stop connections.



TECHNICAL TOURS





Hornsdale Power Reserve - Tesla Battery



Hornsdale Wind Farm

HORNSDALE POWER RESERVE - TESLA BATTERY

At 100MW/129MWh, the Hornsdale Power Reserve is the largest lithium-ion battery in the world, covering approximately one hectare of land, and provides network security services to South Australian electricity consumers in concert with the South Australian Government and the Australian Energy Market Operator (AEMO).

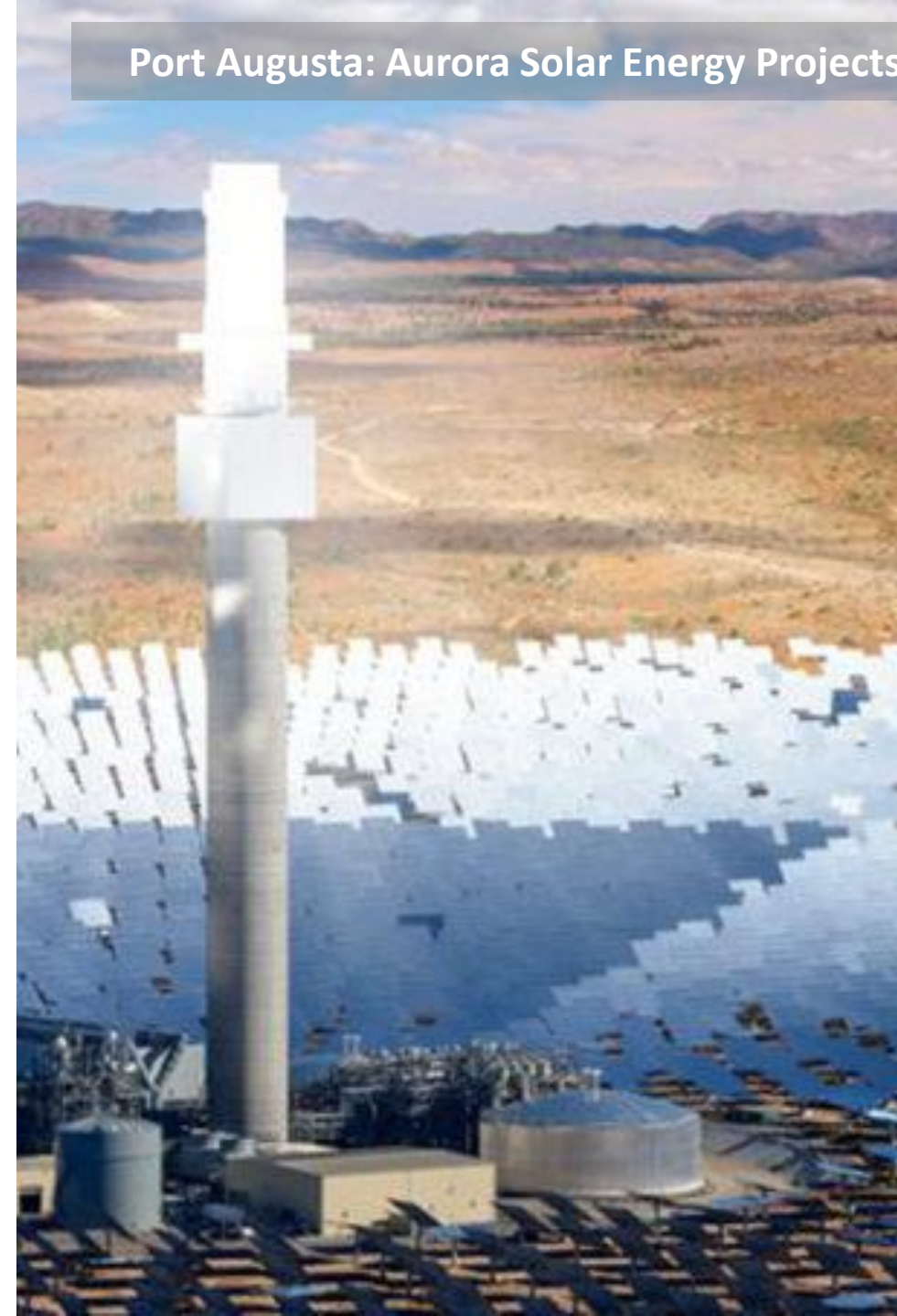
Tesla Powerpack fast ramping capability means that it can dispatch large amounts of power quickly and reliably. This means it can support the South Australian electricity grid by providing frequency control and short-term network security services.



Port Augusta: Sundrop Farms



Port Augusta: Aurora Solar Energy Projects



AURORA SOLAR ENERGY PROJECT, PORT AUGUSTA

The Aurora Solar Energy Project is a 150 megawatt solar thermal power station incorporating 8 hours of storage (1100 megawatts-hours). Aurora will be the most advanced solar project in Australia and is due for completion in 2020. It will deliver over 500 gigawatt-hours of energy annually, which is around 5% of South Australia's energy needs. Storage will enable the solar thermal station to operate just like a conventional coal or gas power station, reliably generating electricity day and night – except without any emissions.



THE FUTURE OF FARMING - SUNDROP FARMS, PORT AUGUSTA

Sundrop Farms operates some of the most advanced greenhouses in the world, enabling them to grow sustainable produce all over the globe. This includes areas unsuited to traditional agriculture; their Port Augusta farm supplies over 15% of Australia's tomatoes grown in an arid environment far from other commercial farming operations.

The \$200 million state-of-the-art solar thermal development sits over 20 hectares and utilises desalination to remove the salt content from the water - producing fresh water that is then used to irrigate the 180,000 tomato plants inside the greenhouse.





Tonsley Innovation Precinct

PARTNERSHIPS

Tonsley is successfully attracting high-profile partnership investors backed by a suite of professional service providers. Current commercial activities focus on design, simulation and modelling, prototyping and demonstrating new products, production and maintenance services.

Siemens, Tonsley's global strategic partner, has maintenance services at the precinct and is committed to partnering with existing and future tenants to expand its work. Other businesses located at Tonsley include ZEISS, SAGE, Simulation Australasia and Micro-X.

Flinders University and TAFE SA provide Tonsley partners with the benefit of access to researchers, educators, advisors and commercialisation partnerships.



HELIOSTAT SA

The University of South Australia (UniSA) has recently built a heliostat test field in Adelaide's northern suburbs with research funding from the Automotive Australia 2020 Cooperative Research Centre (CRC), and in partnership with Precision Components Pty Ltd. The test field, located at Edinburgh, has 25 heliostats and a 16 metre high concentrated solar photovoltaic (PV) receiver.

In a major advancement, UniSA researchers are working on replacing the glass mirrors used for commercial heliostats, with polycarbonate, effectively creating a mirror half the weight of glass mirrors. This would be more robust, and easier to transport.



EXPERIENCE

EXPERIENCE



SOUTH AUSTRALIA'S REGIONS

In Adelaide, one of the world's most walkable cities, major tourist attractions include the famous Adelaide Central Markets, Adelaide Zoo, South Australian Museum, State Library of South Australia, Adelaide Festival Centre and Art Gallery of South Australia, all within close proximity.

Beyond Adelaide delegates may choose to explore one of South Australia's iconic wine regions with over 200 cellar doors within a 1 hour drive (e.g. Barossa, McLaren Vale, Adelaide Hills), the unspoilt wilderness of Kangaroo Island, the seafood capital of Port Lincoln or the breathtaking Flinders Ranges in the outback.

PENFOLDS MAGILL ESTATE



Penfolds
DISCOVER THE BIN WINES

Penfolds
BIN 169
PENFOLDS ESTD 1844

Penfolds
BIN 169
PENFOLDS ESTD 1844

Penfolds
BIN 707
PENFOLDS ESTD 1844

Penfolds
BIN 169
PENFOLDS ESTD 1844

KANGAROO ISLAND



PORT LINCOLN



IRED 2020



Adelaide Australia

12th-16th October 2020